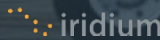


Professional, Leading Flight Data Monitoring (FDM) Solution for Operators of All Types

 Value-Added Partner to Iridium®

Enabling Satcom capabilities in challenging industries and environments has been the cornerstone of SKYTRAC’s business success since the company was founded in 1986.

Our flagship satellite transceiver and on-board server harnesses the world’s only true pole-to-pole satellite network, allowing operators 99.9% global uptime. This reliability allows mission-critical operations in EMS, SAR, offshore oil and gas, scientific exploration, military, and scheduled airline industries to perform when the mission gets tough.

SKYTRAC has over 7,500 users around the globe on all seven continents and ensures long-term support to all customers and partners. Our AS9100D designation ensures leading global brands can trust our systems to perform reliably. In addition, we have cultivated strong partnerships with major OEMs across the globe.

Key Figures

SATCOM Expertise	35+ Years
SKYTRAC Users	7,500+ Users
Systems Certified	900+ Airframes
Global Presence	7 Continents / 100+ Countries

SKYTRAC is part of the ACR Group of companies.



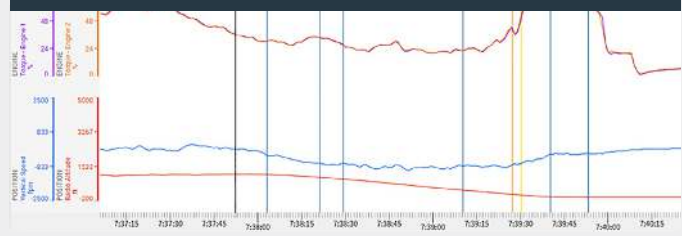
Discover SKYTRAC

Over its 35 year history, SKYTRAC has become the partner of choice for data-guided business insights. As an Iridium Aviation Partner, SKYTRAC is well-positioned to leverage Iridium Certus broadband to provide operators with leading capabilities.





Applications: Real-Time FDM Alerting



Applications: Robust Flight Analytics for Detailed Event Analysis

SAFR FLIGHT DATA MONITORING

SAFR Flight Data Monitoring (FDM) is a web-based platform offering configurable graphical presentations of flight data for aircraft of all types. Users can view data from flights and can set event thresholds to report exceedances on a real-time and post-flight basis. SAFR provides valuable flight data performance and trending. Track fleet activity across the globe, automatically detect in-flight events, and capture robust data to feed your FOQA, MOQA, SMS programs.

Capabilities include:

- Receive critical event alerts (SMS or email)
- Capture and analyze onboard data
- Customize alert thresholds based on customer requirements
- Speed up post-flight analysis
- Reduce insurance costs

- Securely send information to HQ through satellite or Wi-Fi/Cell
- Specific FDM analysis and consultation available*
- Multiple integration options available
- Fixed and rotary-wing compatible

Don't see what you're looking for? To learn about custom FDM development, contact sales@skytrac.ca

INDUSTRY SEGMENTS

Flight Data Analytics for All Segments

SKYTRAC serves the largest organizations in multiple industry verticals. With 7,500+ global customers on all seven continents, we ensure our products and services are highly reliable and are trusted by those that depend on us for mission-critical applications. Our solutions are designed for both fixed-wing and rotary-wing applications.

We serve the following industries:

- Aerial Firefighting
- Business and Commercial Aviation
- Public Safety Industries
- Military and Government
- Tourism
- UAV

Don't see your industry above? To learn about how our solutions can impact your segment, contact sales@skytrac.ca

MULTIPLE STCs AVAILABLE

900+ Airframes and Counting

SKYTRAC holds an extensive list of Supplemental Type Certificates (STC) for over 900 airframes for both fixed wing and rotary wing aircraft. To inquire about aircraft specific STCs, please contact sales@skytrac.ca.

We hold current STCs for aircraft including:

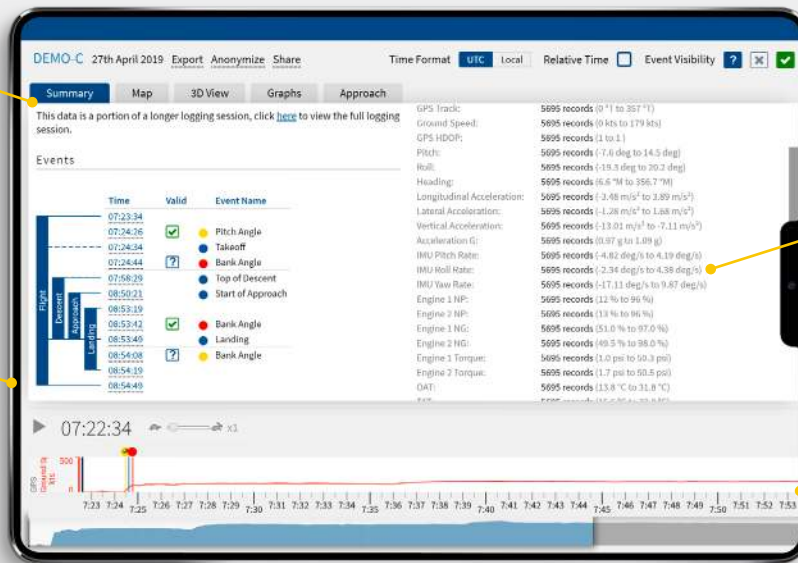
- Bombardier
- British Aerospace
- Cessna
- De Havilland
- Gulfstream
- Leonardo
- LET
- McDonnell Douglas
- Partenavia
- Pilatus
- Sikorsky
- Viking
- Aerospatiale
- Airbus
- Beechcraft
- Bell
- Boeing

For more information, contact a connectivity expert at sales@skytrac.ca



SAFR FDM ESSENTIALS AND PLUS+

All-in-one dashboard with easy navigation between data formats



Access the web-based SAFR FDM platform through any device including desktops, laptops, and mobile phones

Web and map-based dashboard for complete insight into flight data

Gain real-time insights into all flights, flight paths, and flight operations

Identify high risk events and categorize exceedances by impact to your organization

SAFR PLUS VS. SAFR ESSENTIALS

System Capabilities/Features	SAFR Essentials	SAFR Plus+
Web-based SaaS Platform (Accessible on PEDs)	✓	✓
Analyze Data with Sophisticated Interactive Graphs	✓	✓
Wide Breadth of Existing STCs	✓	✓
Automatic Data Acquisition, Recording, and Processing	✓	✓
Automated Aircraft Exceedance Detection	✓	✓
Multiple Mounting Configurations	✓	✓
Deep Data Analysis and Reporting with Multiple Export Options	✓	✓
Automated Flight Path Exceedance Detection	✓	✓
White Label Branding Option	✓	✓
2D & 3D Flight Review and Playback	✓	✓
Advanced Insights to Verify and Understand Severe Exceedances		✓
Dedicated Program Manager as Sole Point of Contact		✓
Emails Detailing Newly Detected Severe Events		✓
Monthly Trending Reports Sent to Your Email		✓
Reduce Internal Overhead by Leveraging our Expertise		✓
WebEx Training for the SAFR platform (Available Upon Request)		✓

Specifications subject to change. Contact sales@skytrac.ca for latest revision.